

GPON ONT

i5200-series

Residential Open Access ONT

The Icotera i5200 residential ONT is designed as a long-term GPON termination point in a two-box installation. Optional VoIP and CATV, ITU-T OMCI standards compliant provisioning, a vendor independent approach and easy installation together with Icotera's focus on design and usability, make the i5200 an obvious choice for GPON fiber termination.

- Aesthetic design
- Unique slide-on mechanism
- Flexible FTU with in-wall installation option
- Vendor independent provisioning and management
- Lowest Total Cost of Ownership
- Designed for long lifetime installations
- BBF.247 certification



Full Flexibility

Together with the vendor independent provisioning and management, the i5200 series create the standards setting for a residential Open Access ONT. For installation with in-wall fiber termination within the standard wall-can, the i5200 is hiding all sensitive fiber termination and splicing inside the wall secured with the uniquely designed FTU, exposing only customer essential interfaces. The alternative scenario is without FTU as in a common patch installation, where the ONT is directly mounted on the wall.



FTU installation



Patch installation

i5200 Residential Open Access ONT

FEATURES

- Vendor-independent GPON ONT
- Hardware forwarding
- Long-lifetime standard interfaces
- Protocol transparent forwarding
- BBF.247 certification

WAN INTERFACE

- GPON 2.488/1.244 Gbps (DS/US)
- Wavelength: TX: 1310nm, RX: 1490nm
- G.984.1,2,3,4,5 compliant
- G.988 compliant
- Multi-vendor support
- Forward Error Correction (FEC)
- Ethernet GEM support
- AES encryption
- Dying gasp
- Class B+ optics

SUPPORTED PLATFORMS

- Nokia ISAM 7330/7360
- Huawei MA5600/5800
- ZTE C320

Other specific platforms supported on a per integrational basis, contact sales for more information.

LAN INTERFACES

- 1x RJ45 connectors 10/100/1000 or 1x RJ45 100/1000/2500 Base Tx
- Auto MDI/MDX
- Jumbo packets
- 256 MACs
- VLAN
- QinQ support
- Multicast support
- IGMP v1/v2/v3 snooping

QOS

- Support DBA in SR and NSR modes
- Support for Strict Priority and Weighted Fair Queuing
- Support for TCONTs 1-5
- 8 hardware queues
- Classification
- Marking
- Queuing
- Rate limiting
- DSCP, 802.1p

CATV (OPTIONAL)

Optical parameters

- Input wavelength: 1550 - 1560nm
- Input level range: -9 dBm to 2dbm
- Optical connector: SC/APC

RF parameters

- RF connector: 75R "F"
- Frequency: 45MHz - 1GHz
- Tilt: 2dB
- AGC: 81 ± 1dB μ V
- CNR: 45dB
- CSO: 60dB
- CTB: 60dB
- WDM filter: present
- Management: via OMCI

VoIP (OPTIONAL)

- 1x POTS lines
- BS 6312 compliant socket
- SIP (RFC3261) over IPv4
- 3 REN support
- DTMF signalling - SIP INFO - Inband - Auto - RFC 2833
- Caller ID support (DTMF/FSK/DTMF DK)
- CLIR
- Advanced dialplan
- Class 5 services
- - Forward all calls
- - Forward on busy
- - Forward on no answer
- - Call waiting
- Codecs:
- - G.711A a-law
- - G.711U μ -law
- - G.722
- - G.729AB
- Codec negotiation
- Modem/Fax detection
- Auto gain control
- Adaptive jitter buffer 10-300ms
- Silence suppression
- G.165 Echo Cancellation
- LEC (Line Echo Cancellation) 2-128ms
- VAD (Voice Activity Detection)
- CNG (Comfort Noise Generation)

MANAGEMENT & MONITORING

- Zero-touch configuration with OMCI provisioning
- Dual bank firmware w/ fail-safe upgrading
- Hardware watchdog

POWER SUPPLY

- DC 12V/0.5A
- 150cm cable
- White PSU + cable

OPERATIONAL SPECIFICATIONS

- DC 12V input +/- 10%
- Operating temperature: 5 - 45 C
- Storage temperature -30 to 65 C
- Humidity 0 to 95% (non-condensing)

LEDs

- CATV green LED - Signal status
- GPON green LED - Connection status
- VoIP green LED - Registration status
- LAN green LED - Link status

PHYSICAL SPECIFICATIONS

- Size: refer to configuration possibilities table below
- RJ45 LAN port
- BS 6312 compliant socket for VoIP (optional)
- Reset button - reboot/factory reset (refer to configuration possibilities table below)
- Power button (refer to configuration possibilities table below)
- Area for visible GPON label right side - 16x30mm for optional GPON SN label
- Product SN, GPON SN, FW version and MAC address label - ONT bottom

FIBER TERMINATIONS

- Slide-on-mechanism for easy installation
- Mountable on Schuko in-wall installation
- Wall mountable
- Up to 2 fiber terminations with 20mm splicing rods (optional)
- External SC ports

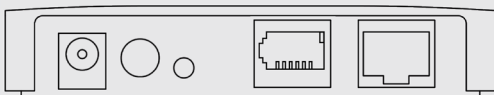
INCLUDED IN THE BOX

- ONT
- 12V PSU adapter
- FTU for Schuko installation (optional)
- 2x label with GPON SN

OPTIONAL EXTRAS

- SC/SC adapter
- Screws mechanical (M4) or threaded (D6)

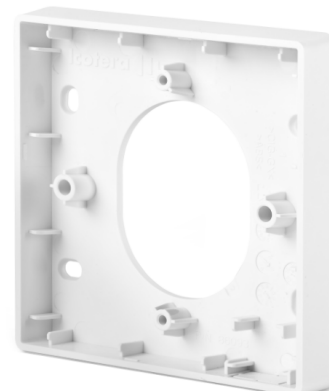
i5200 Residential GPON ONT Configuration possibilities



Gateway Interface Configurations:

Model	LAN	VoIP	CATV	Termination	Size (mm)
i5204-20	1x1G		x	Patch	130x130
i5214-00	1x2.5G		x	Patch	130x130
i5208-20	1x1G			Patch	130x130
i5218-00	1x2.5G			Patch	130x130
i5205-00	1x1G	x		FTU	100x100

NOTE: Please contact Sales for further details on information listed and feature requests.



Wall plate